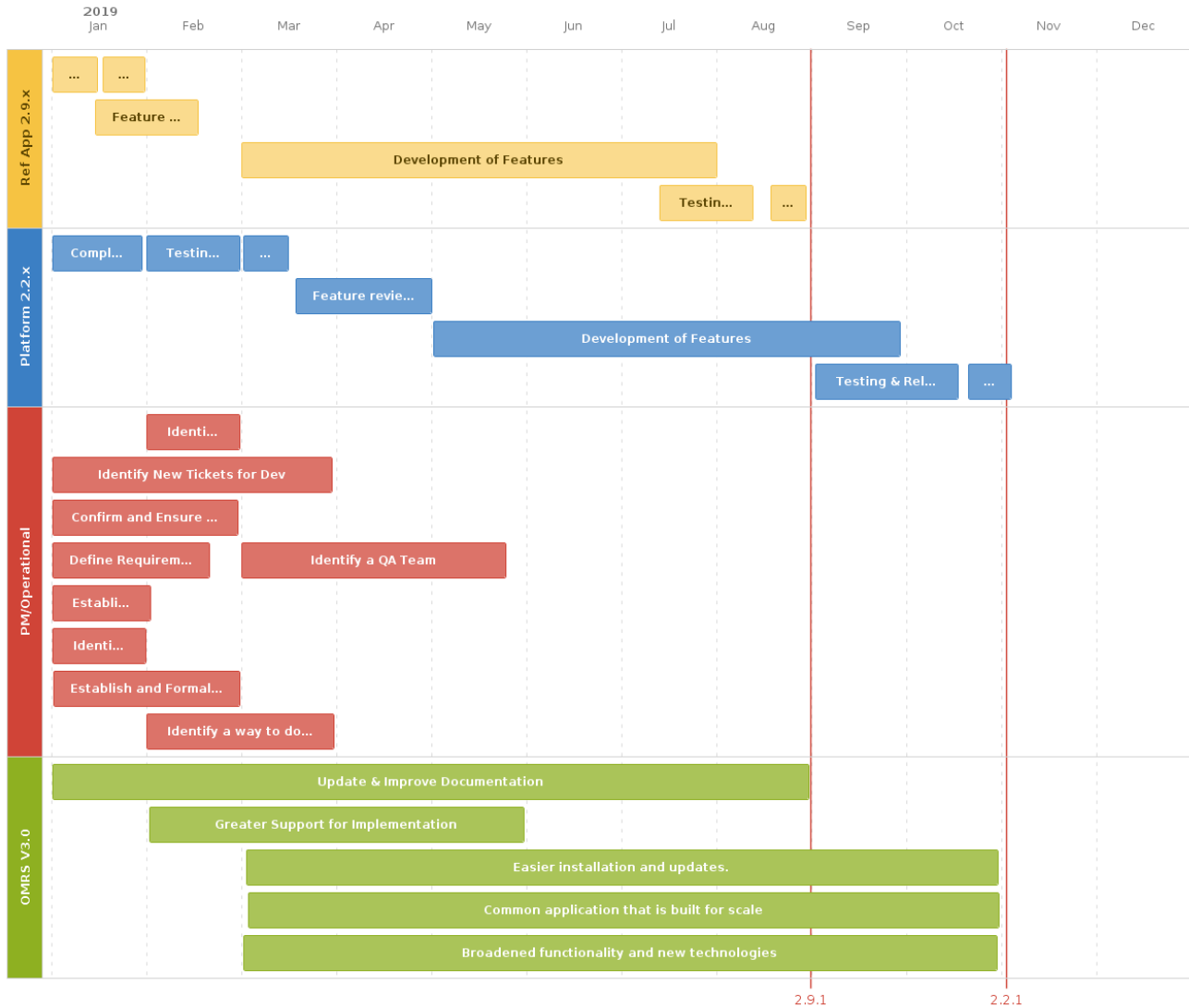


# 2019 Draft Road Map

## 2019 OpenMRS Community RoadMap V1



We're playing with a new format for the road map... so don't believe anything you see here. Use the [Road Map](#) page instead.

The OpenMRS Road Map is a set of milestones not only for the core OpenMRS platform, but also for core and sponsored modules as well as related tasks that help us meet the needs of our implementations.

For information about how the road map milestones are chosen and prioritized, see the [Technical Roadmap Planning](#) page.

For information about ongoing development tasks, see the [Sprint Schedule](#) page.

## OpenMRS Someday

Features planned for the future. Once these have been designed, they will be attached to a milestone

Feature	Status	Completion Status
Sessions (Encounter Transactions)	IN DESIGN	
Metadata Mapping (Design Page)		
Common or Centralized Approach to Tagging	 <b>TRUNK-2284</b> - Common tagging mechanism for openmrs objects DESIGN	
Handling Observation Exceptions (Design Page)		
Concept Class Hierarchy		
Support for DME Supplies		
Cohort-level Encounters and Observations		
Improved State Machinery (Design Page)	 <b>TRUNK-2995</b> - A Program work flow should provide the transition order of its states READY FOR WORK	
Episodes of Care and Protocols	IN DESIGN	
Support for Care Settings		
Form Model improvements		
Support for person_identifier		
Separating organizational from privilege-related roles		
Contact Information On Persons		
Support for Clustering	 <b>TRUNK-314</b> - Investigate about support for Servlet Container Clustering CLOSED	
Support for Drug Formularies	 <b>TRUNK-4535</b> - Support formulary status for drugs READY FOR WORK	
Support external master registries of Patient, Location, Provider, Concept, and other metadata	 <b>TRUNK-1991</b> - Support external master registries of Patient, Location, Provider, Concept and other metadata DESIGN	
Centralized Auditing (Design Page)		

Support for Structured Numerics	<div data-bbox="630 142 1263 210"><span data-bbox="636 151 662 184">+</span> <b>TRUNK-413</b> - Implement the Structured Numeric datatype <span data-bbox="646 178 717 199">DESIGN</span></div>	
Event Bus for OpenMRS (enterprise-quality event messaging)		