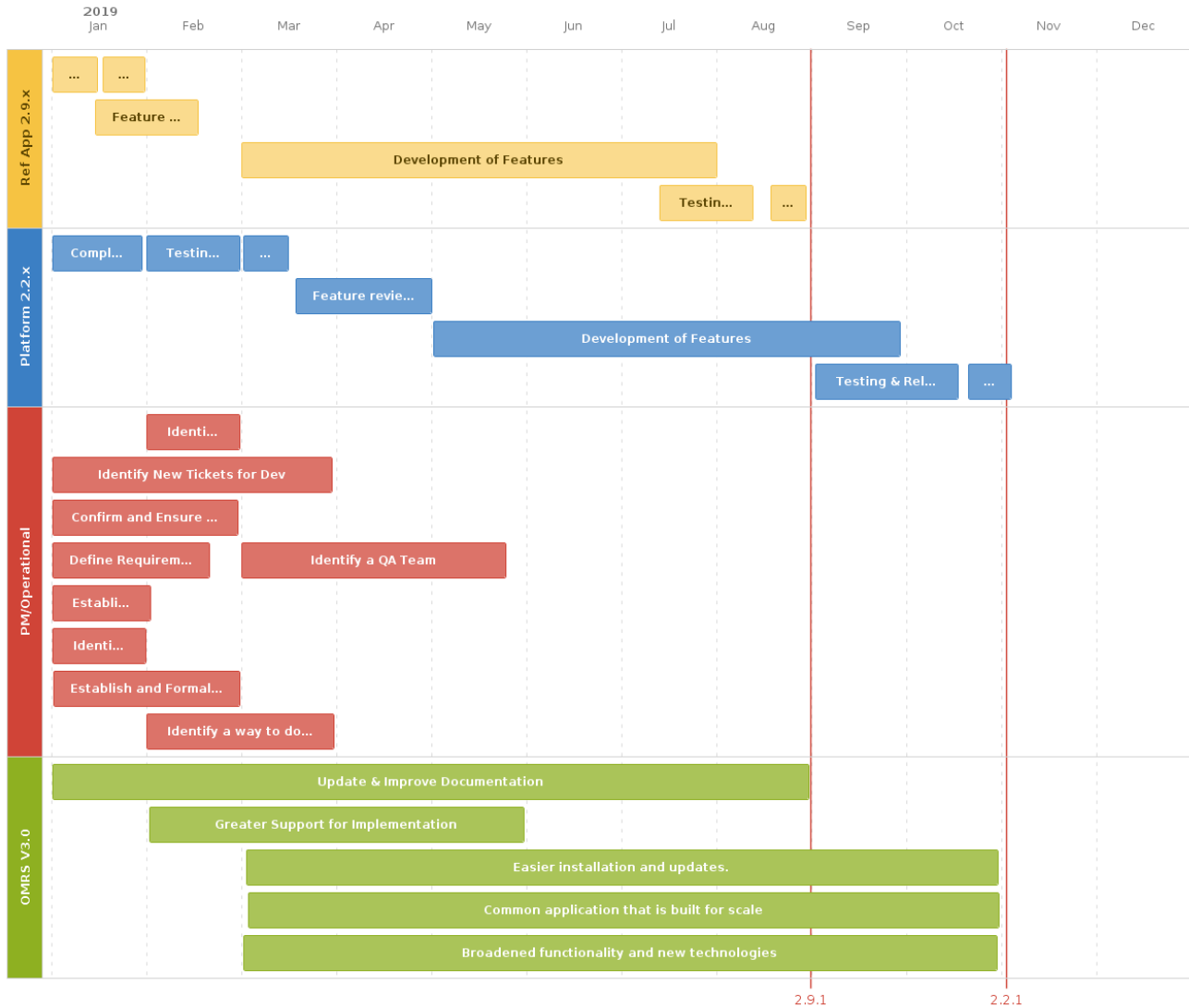


# 2019 Draft Road Map

## 2019 OpenMRS Community RoadMap V1



We're playing with a new format for the road map... so don't believe anything you see here. Use the [Road Map](#) page instead.

The OpenMRS Road Map is a set of milestones not only for the core OpenMRS platform, but also for core and sponsored modules as well as related tasks that help us meet the needs of our implementations.

For information about how the road map milestones are chosen and prioritized, see the [Technical Roadmap Planning](#) page.

For information about ongoing development tasks, see the [Sprint Schedule](#) page.

## OpenMRS Someday

Features planned for the future. Once these have been designed, they will be attached to a milestone

| Feature  | Status  | Completion Status   |
|--|---|---|
| Sessions (Encounter Transactions)  | IN DESIGN   |    |
| Metadata Mapping (Design Page)   |   |   |
| Common or Centralized Approach to Tagging  |  <b>TRUNK-2284</b> - Common tagging mechanism for openmrs objects<br>DESIGN  |   |
| Handling Observation Exceptions (Design Page)  |   |   |
| Concept Class Hierarchy  |   |   |
| Support for DME Supplies   |   |   |
| Cohort-level Encounters and Observations   |   |    |
| Improved State Machinery (Design Page)   |  <b>TRUNK-2995</b> - A Program work flow should provide the transition order of its states<br>READY FOR WORK                   |    |
| Episodes of Care and Protocols   | IN DESIGN   |  |
| Support for Care Settings  |   |   |
| Form Model improvements  |   |  |
| Support for person_identifier  |   |  |
| Separating organizational from privilege-related roles   |   |  |
| Contact Information On Persons   |   |  |
| Support for Clustering   |  <b>TRUNK-314</b> - Investigate about support for Servlet Container Clustering<br>CLOSED                                     |  |
| Support for Drug Formularies   |  <b>TRUNK-4535</b> - Support formulary status for drugs<br>READY FOR WORK  |   |
| Support external master registries of Patient, Location, Provider, Concept, and other metadata |  <b>TRUNK-1991</b> - Support external master registries of Patient, Location, Provider, Concept and other metadata<br>DESIGN |  |
| Centralized Auditing (Design Page)   |   |   |

|  |   |   |
|--|---|---|
| Support for Structured Numerics                            | <div data-bbox="633 136 1258 210"><span data-bbox="641 147 665 178">+</span> <b>TRUNK-413</b> - Implement the Structured Numeric datatype<br/><span data-bbox="641 178 714 199">DESIGN</span></div> |  |
| Event Bus for OpenMRS (enterprise-quality event messaging) |   |  |