

# Home

## Welcome to the OpenMRS Wiki

The OpenMRS Wiki is a community-maintained collection of documentation about our software and about our community.

If you previously accessed the wiki/JIRA – you still have access. **Otherwise, new OpenMRS IDs recently created after 13 June 2016, please contact the [Help Desk](#) to request access to the wiki for edit/write access. You can browse anonymously. Please explain why you need access. We are now manually granting edit/write access to the wiki to prevent spam.**

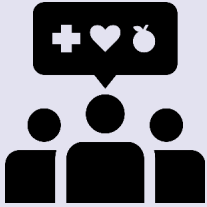
OpenMRS volunteers work hard to share knowledge and maintain this information, and we encourage you to help by fixing errors, updating knowledge, and adding comments or questions to pages.

If you're new to OpenMRS, read [Introduction to OpenMRS](#) for background about what we're doing, and visit [openmrs.org/help](http://openmrs.org/help) to get involved.



[Subscribe to be informed of updated Wiki pages.](#)

## OpenMRS Talk: Community Discussion



Visit **OpenMRS Talk** at <https://talk.openmrs.org/> for our discussion platform and a place where you can hang out and talk about OpenMRS with other community members. Talk is an online home for OpenMRS users, implementers, and contributors to learn from each other, share experiences ... or just to make and build friendships. Latest topics include:

## OpenMRS Community Calendar

[See the main calendar for more information.](#)


Team Calendars

## Ask OpenMRS: Community Technical Support



**Ask OpenMRS is our community software support site, where you can ask questions about OpenMRS and get answers.** Anyone can ask a question. Anyone can answer a question. The best questions & answers earn "likes" and rise to the top!

To get started, all you need to do is sign in to OpenMRS Talk with your OpenMRS ID.

 Unknown macro: 'auibutton'

## Recent Wiki Updates

- [Page Sync2 Sprint for UgandaEMR](#) (Projects)
- [Page Platform 2.3.0 JONATHAN AJAL ODORA](#) (about 2 hours ago)
- [Release Management Page](#) (Resources)
- [Page OpenMRS Reference](#) [Nathan Ruhanga](#) (2019-07-18)
- [Application Release Process](#) (Documentation)
- [Page 2019-07- 15 Project Management](#) [Cintia Del Rio](#) (2019-07-18)
- [Meeting](#) (Resources) [Cynthia Antwi](#) (2019-07-15)
- [Page 2019-07- 01 Project Management Meeting](#) (Resources)
- [Page UI Spring MVC](#) (Documentation) [Cynthia Antwi](#) (2019-07-15)
- [Page HTML Form Entry Module](#) [Sharif Magembe](#) (2019-07-15)
- [HTML Reference](#) (Documentation) [Mike Seaton](#) (2019-07-13)
- [Page User Guide: Open Concept Lab \(OCL\) for OpenMRS](#) (Projects)
- [PNG File image2019-7-12\\_12-42-](#) [Lincoln Karuhanga](#) (2019-07-12)
- [33.png](#) (Projects) [Lincoln Karuhanga](#) (2019-07-12)
- [PNG File image2019-7-12\\_12-40-7.png](#) (Projects)
- [PNG File image2019-7-12\\_12-31-](#) [Lincoln Karuhanga](#) (2019-07-12)
- [56.png](#) (Projects) [Lincoln Karuhanga](#) (2019-07-12)
- [PNG File image2019-7-12\\_12-30-4.png](#) (Projects)
- [PNG File image2019-7-12\\_12-22-](#) [Lincoln Karuhanga](#) (2019-07-12)
- [3.png](#) (Projects) [Lincoln Karuhanga](#) (2019-07-12)
- [Page Overview: Open Concept Lab \(OCL\) for OpenMRS](#) (Projects)
- [Page OCL Client for OpenMRS \(Pr](#) [Lincoln Karuhanga](#) (2019-07-12)
- [ojects\)](#) [Lincoln Karuhanga](#) (2019-07-10)
- [Page OCL Client Sprints](#) (Projects) [Lincoln Karuhanga](#) (2019-07-10)
- [Page Data Filter Module](#) (Documentation) [Dimitri R](#) (2019-07-09)
- [Page OCL User Acceptance Testing Feedback](#) (Projects)
- [Page Managing a Security](#) [Lincoln Karuhanga](#) (2019-07-09)
- [Vulnerabilities in OpenMRS](#) (Documentation)
- [Page Patient Queueing In Reference](#) [Cynthia Antwi](#) (2019-07-08)
- [Application](#) (Projects) [Samuel Lubwama](#) (2019-07-08)